



CG208 | CG212 2-inch

CG408 | CG412 4-inch



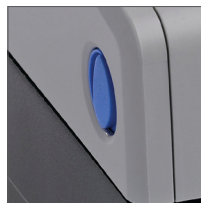
Thermal Desktop Printer | CG Series



Performance. Convenience. Versatility.



Antimicrobial Casing



Top Cover Safety Latch



Easy Print Head Replacement



Drop-Load-Go Media Bin

Streamlined Features

- 203 or 305 dpi Print Resolution
- 4 MB Flash Memory
- Thermal Transfer and Direct Thermal
- Antimicrobial Casing (CG2 only)
- Multiple Codepage Support
- Competitive Emulation Options
- Easy Maintenance

Industry Verticals

- Healthcare
- Retail
- Transportation & Logistics
- Manufacturing
- Office Administration
- Education & Libraries
- Hospitality
- Travel & Leisure

Industry Applications

- Specimen Labeling
- Wristband Printing
- Shelf Labeling
- Product Labeling
- Office Mailings
- File Folder Labeling
- Layaway Marking
- Price Markdowns





GENERAL SPECIFICATIONS

CG208 | CG212 | CG408 | CG412

PRINTER MODEL		CG208	CG212	CG408	CG412
PRINT SPECIFICATIONS					
Printing Method		Direct Thermal/Thermal Transfer (TT) or Direct Thermal only (DT)			
Print Resolution		203 dpi (8 dots/mm)	305 dpi (12 dots/mm)	203 dpi (8 dots/mm)	305 dpi (12 dots/mm)
Printing Speed		Maximum 4 ips (100mm/sec)			
Max. Print Area	Width	2.2" (56 mm)	2.2" (56 mm)	4.1" (104mm)	
	Length	23.6" (600 mm)	15.75" (400 mm)	11.8" (300 mm)	
MEDIA SPECIFICATIONS					
Sensor Type		I-Mark Sensor (Reflection type), Label Gap Sensor (Transmissive type)			
Media Type		Roll and Fanfold (Face-in, Face-out)			
Media Size	Width	0.47" to 2.36" (12 to 60 mm)		0.87" to 4.21" (22 to 107 mm)	
	Length	Continuous: 0.23" to 23.62" (6 to 600 mm) Tear-Off: 0.47" to 23.62" (12 to 600 mm)	Continuous: 0.23" to 15.75" (6 to 400 mm) Tear-Off: 0.47" to 15.75" (12 to 400 mm)	Continuous: 0.27" to 11.8" (7 to 300 mm) Tear-Off: 0.87" to 11.8" (22 to 300 mm)	
	Thickness	0.0024" to 0.0075" (0.06 to 0.19 mm)			
	Roll Specs	Maximum outer diameter 5.12" (130 mm) - inner diameter 1.57" (40 mm), Fan fold paper: Maximum height 3.94" (100 mm)			
Ribbon (TT only)		Width: 2.32" (59 mm), Maximum outer diameter: 1.50" (38 mm), Paper core: 0.5" (12.7 mm), Face-Out		Width: 4.33" (110 mm), Maximum outer diameter: 1.50" (38 mm), Paper core: 0.5" (12.7 mm), Face-Out	
MEMORY					
Flash ROM: 4 MB, RAM: 8 MB					
FONT/SYMBOLOGIES					
Internal Fonts		XU, XS, XM, XB, XL, OCR-A (15x22, 22x33), OCR-B (20x24, 30x36), CG Times, CG Triumvirate			
Barcode Symbolologies	Linear	UPC-A/UPC-E, JAN/EAN, CODE39, CODE93, CODE128, GS1-128(UCC/EAN128), CODABAR(NW-7), ITF, Industrial 2of5, Matrix 2of5, BOOKLAND, MSI, POSTNET, GS1 DataBar(RSS) barcode			
	2-D	QR code, MicroQR, PDF417, MicroPDF, MAXI code, GS1 DataMatrix (ECC200)			
	Composite Symbols	EAN-13 Composite, EAN-8 Composite, UPC-A Composite, UPC-E Composite, GS1 DataBar Composite, GS1 DataBar Truncated Composite, GS1 DataBar Stacked Composite, GS1 DataBar Stacked Omni-Directional Composite, GS1 DataBar Limited Composite, GS1 DataBar Expanded Composite, GS1 DataBar Expanded Stacked Composite, GS1-128 Composite			
INTERFACE CHARACTERISTICS					
Interface Options		USB + RS232C model, USB + LAN model			
Command		SBPL/SZPL		Optional: IEEE1284 + USB	
				Optional: SDPL or SEPL	
OPERATING CHARACTERISTICS					
Power Requirements		AC Adapter Input voltage: AC100V-240V±10%, Frequency: 50/60Hz, Output voltage: DC19V±5%, 3A		AC Adapter Input voltage: AC100V-240V±10%, Frequency: 50/60Hz, Output voltage: DC19V±5%, 3.68A	
Environment	Operating	0-35°C / 30-80% RH (without condensing)			
	Storage	-10-60°C / 15-85% RH (without condensing)			
Regulatory Approvals		FCC15B Class B, CE (EN55022, EN55024), GB9254-1998, GB17625.1(2003, CISPR22, CISPR24, KN22, KN24, RoHs compliant, Electrical Power Saving (International Energy Star Program, at usage of AC Adapter)			
Dimensions		5.04" (128 mm) W x 9.25" (235 mm) D x 6.81" (173 mm) H		7.04" (179 mm) W x 9.37" (238 mm) D x 6.81" (173 mm) H	
Weight		TT: 3.5 lbs (1.6kg), DT: 3.3 lbs (1.5kg)		TT: 4.2 lbs (1.9kg), DT: 3.75 lbs (1.7kg)	
OTHER					
Optional Accessories		Cutter, Dispenser		Real Time Clock	
Other Features		Antimicrobial Finishing — Resin of the enclosure/control panel include an antibacterial substance.			



SATO AMERICA CORPORATE

10350-A Nations Ford Rd
Charlotte, NC 28273
Phone: (704) 644-1650
Fax: (704) 644-1662
sales-sallc@sato-global.com

LABEL MANUFACTURING, SERVICE & SALES

UNITED STATES MEXICO CENTRAL AMERICA
CANADA CARIBBEAN

www.satoamerica.com